

Salt Lake School for the Performing Arts Emergency Plan

Emergency Procedures and Guidelines for Principals, Teachers, Staff and Administrators

Salt Lake School for the Performing Arts
2291 South 2000 East
Salt Lake City, UT 84106
Phone 801 466-6700

Edited October 12, 2021



Salt Lake City School District

General Emergency Procedures

The emergency procedures outlined in this manual are intended to serve as general guidelines. Every situation is different and must be handled according to the immediate circumstances. School and district staff and personnel are required to read, understand, review, and practice these procedures on a regular basis. The order in which the procedures are listed throughout this manual is only a guide, and some procedures may not be applicable in certain situations.

The general emergency procedures listed below are applicable to any emergency situation.

- Call 911, if necessary, and the principal.
- Principal/designee notifies Dr. Timothy Gadson, **Superintendent** or superintendent's designee Dr. Gwendolyn Johnson-White, Associate Superintendent.
- Take charge of area(s) until the incident is contained, or until you are relieved by the principal, Salt Lake Police Department, or Fire Department.
- Notify parents as soon as possible about any emergency at school. This initial communication can be brief and should be followed up later with a more detailed message.
- Preserve evidence and keep detailed notes of incident.
- Refer any media inquiries to the Executive Director of Communications and Community Relations.
- When incident has ended or has been resolved, consult with Executive Director of Communications and Community Relations regarding follow-up communication to parents/families about the incident.

Table of Contents

SECTION ONE: EMERGENCY CONTACTS

Calling Tree.....	3
Emergency Directory.....	4
Crisis Team/ First Aid.....	5
General Phone Numbers.....	6
Administration and Staff Responsibilities.....	7
Media / Public Information.....	8

SECTION TWO: EMERGENCY PROCEDURES

Active Shooter.....	9
Assault / Fights.....	10
Bomb Threat.....	11
Death (see Serious Injury)	
Delayed Start or Early Closure.....	12
Earthquake.....	13
Electricity Disruption (see Utility Break / Disruption)	
Fire.....	14
Hazardous Materials / Chemical Spill.....	15
Hostage.....	16
Intruder.....	17
Natural Gas Leak / Break (see Utility Break / Disruption)	
Radio Communications.....	18
Secure/Lock-Down.....	19
Serious Injury / Death.....	20
Severe Storm.....	21
Sheltering.....	22
Student Unrest.....	23
Suicide Attempt At School.....	24
Utility Break / Disruption.....	25
Water Line Break / Disruption (see Utility Break / Disruption)	
Weapons.....	26

SECTION THREE: RELOCATION AND REUNIFICATION

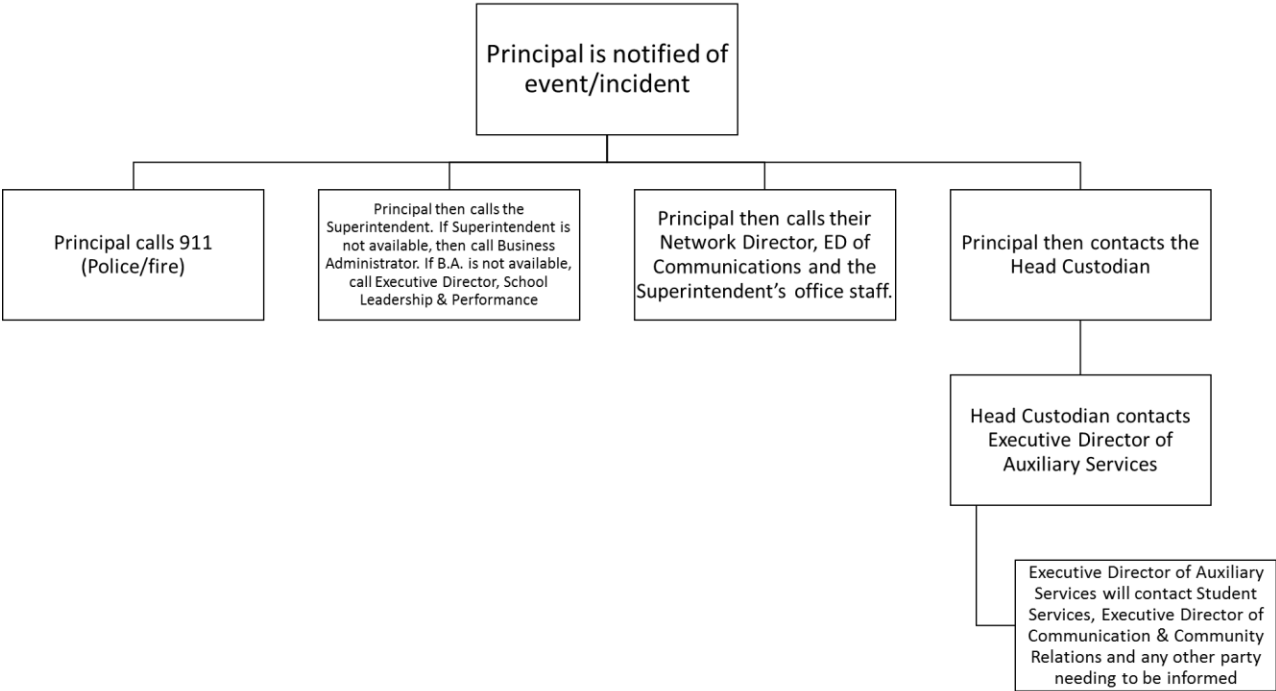
Emergency Release of Students.....	27
Evacuation/Relocation.....	28
Reunification.....	29

SECTION FOUR: FORMS AND REPORTS

After Action Report.....	30
Emergency Compliance and Assurance Form.....	32

SECTION ONE: EMERGENCY CONTACTS

**SLSPA
Calling Tree**



SECTION ONE: EMERGENCY CONTACTS

Salt Lake School for the Performing Arts Emergency Directory

Emergency Phone Location Main Office
Emergency Phone Number / Extension *(801) 466-6700 Ext. 101

Title	Emergency position	Name	Work Phone	Cell Phone
Principal	Incident Manager	Lucas Charon	801 466-6700	801 867-8573
School Resource Officer	Emergency Services Liaison	Sgt. Doug Teerlink	385-228-8072	385-228-8072
Executive Director of Communication & Community Relations	Communications Liaison	Yándary Chatwin	801-578-8271	801-682-0816
Public Information Officer		Jason Olsen	801-578-8352	801-540-6802
Assistant principal or secretary				
Head Custodian	Safety Officer	Richard Vales	801 466-6700	801 835-4830
Attendance Secretary	Documentation/accountability	Karen Keefe	801 466-6700	801 608-5705
Assistant Principals, Secretaries, Counselors, other Office Personnel, Teachers	Branch Directors	Chris Wright	801 466-6700	415 713-8572
		Shelly Marino	801 466-6700	801 499-4692
		Jamie Evans	801 466-6700	801 750-0279
teachers assigned by area	Group leaders	Lexie Hall	801 466-6700	801 860-0944
		Jamie Evans	801 466-6700	801 750-0279
Superintendent		Dr. Timothy Gadson	801-578-8349	954-729-4365
Associate Superintendent		Dr. Gwendolyn Johnson-White	801-578-8347	561-635-2267
Business Administrator		Alan Kearsley	801-578-8334	801-336-8722
Executive Director of Human Resource Services		Logan Hall	801-578-8420	801-641-8899
Executive Director of Auxiliary Services		Paul Schulte	801-974-8372	801-750-4433
Assistant Director Facility Services		Ricky Martinez	801-886-8929	801-979-8371

- **Principal:** (Incident Manager) point of contact for emergency responders. Approves the activation of the incident management system. Communicates with District personnel. Principal Incident Manager works hand-in-hand with Police/Fire/etc.
- **School Resource Officer:** (Services Liaison) Works closely with Incident Manager. Stays in contact with emergency responders. Participates as first responder.
- **Executive Director of Communication & Community Relations:** (Communications Liaison) reports directly to the Incident Manager. Determines what information is suitable for release to the press. Determines a specific location as a gathering point for the media.
- **Assistant Principal or Principal Secretary:** (Operations Officer) reports directly to the Incident Manager. Supervises Branch Directors, Group Leaders, and Teachers. Responsible for communicating with Branch Directors and relaying pertinent information to Incident Manager.
- **Head Custodian:** (Safety Officer) reports directly to the Incident Manager. Provides advise on the safety of emergency operations
- **Attendance Secretary:** (Documentation/Accountability) must have immediate access to records containing the daily school attendance. Reports to Incident Manager.
- **Assistant Principals, Secretaries, Counselors, other Office Personnel, Teachers under the direction of Operations Officer:** (Branch Directors) Responsible for implementation of the action plan in their assigned branch. Responsible for communications to and from the Group Leaders. Provide update reports to the Operations Officer.
- **Teachers assigned by area responsible for student accountability from a pre-determined group of classrooms:** (Group Leaders) Responsible for sweeping (searching) predetermined "common" areas for students not in class such as hallways, restrooms, library, etc. as well as the classrooms they are assigned to.
- **Teachers:** The teachers are directly responsible for the safety and accountability of their students. The welfare of the students will be dependent on the teachers' knowledge of the incident action plans. Keep students in assigned evacuation area. Teachers report to and receive information from the Group Leaders.

SECTION ONE: EMERGENCY CONTACTS

Salt Lake School for the Performing Arts Crisis Team

Position	Name	Work Phone	Cell Phone
Principal/ Administrator	Lucas Charon	801 466-6700	801 867-8573
Assistant Principal	Chris Wright	801 466-6700	415 713-8572
Secretary	Shelly Marino	801 466-6700	801 499-4692
Resource Officer	George Uyema	801 466-6700	385 414-1169
Head Custodian	Richard Vale	801 466-6700	801 835-4830
School Nurse	Judi Yaworkski	801 466-6700	801 588-9133
Counselor	Jileen Martin	801 466-6700	801 232-4949
SCC Chairperson	Doug Keefe	801 466-6700	801 608-5704
SIC Chairperson	Doug Keefe	801 466-6700	801 608-5704
Food Services Manager			
PTA President	Carissa Loftus	801 466-6700	435 714-2988
School Leadership	Chris Gesteland	801 466-6700	801 860-0944

Persons Certified in First Aid / CPR / CERT

Name	Room No. or Location	Phone or Ext	First Aid	CPR
Lucas Charon	SPA	801 466-6700	N	Y
Lexie Hall	SPA	801 466-6700	Y	Y
Chris Wright	SPA	801 466-6700	N	Y
Karen Keefe	SPA	801 466-6700	Y	Y
Shelly Marino	SPA	801 466-6700	Y	Y

SECTION ONE: EMERGENCY CONTACTS

General Phone Numbers

All Emergencies (Fire, Police, Hazmat, Ambulance)	911
American Red Cross (local)	801 892-4000
Child Abuse Hotline (local & statewide 24/7 hours).....	855 323-3237
Fire Department, Non-Emergency	801 596-5230
Primary Children’s Medical Center Emergency	801 662-1000
Peak Alarm (to contact District Security TEAM)	801 466-7321
Police (see Salt Lake City Police)	
Poison Control (see Utah Poison Control Center)	
Dominion Energy (natural gas).....	800 767-1689
Rocky Mountain Power (power outages).....	877-508-5088
Safe UT/National Suicide hotline.....	1-800-273-8255 or Text TALK to 741-741
Salt Lake City Department of Public Utilities (water/sewer).....	801 483-6700
Salt Lake City Emergency Management Services Department.....	801 790-4466
Salt Lake City Police (non-emergency)	801 799-3000
Salt Lake City School District:	
Auxiliary Services.....	801 974-8367
Business Administration.....	801 578-8260
C&TE	801 481-4873
Facility Services	801 886-8929
Food Services	801 974-8380
Health Services (school nurses)	801 578-8684
Executive Director of Communications and Community Relations	801 578-8271
School Leadership	801 578-8350
Student Services.....	801 578-8206
Superintendent’s Office.....	801 578-8351
Support Services.....	801 974-8380
Translation and Interpreting Services	801 578-8378
Transportation.....	801 974-8345
Salt Lake County Division of Youth Services	385 468-4500
Salt Lake Valley Health Department.....	801 468-2750
After hours emergency.....	801 468-2710
National Response Center (hazardous spill reporting)	800 424-8802
Utah Division of Emergency Management	801 538-3400
Utah Poison Control Center:	
Salt Lake City.....	801 587-0600
Toll-free.....	800 222-1222
Valley Mental Health (Suicide Prevention)	801 261-1442

SECTION ONE: EMERGENCY CONTACTS

Administration and Staff Responsibilities

Principal or Designee:

- Verify information.
- Call 911, if necessary.
- Seal off high-risk area(s).
- Notify Superintendent or designee, Network Director, and Executive Director of Communications and Community Relations. Notify students and staff. Note, depending on the emergency, students may be notified by Teachers.
- Keep detailed notes of the event.
- If possible, convene Crisis Team and implement crisis response procedures.
- Refer media to the Executive Director of Communications and Community Relations.

Teachers or Staff:

- Verify information.
- Notify Principal
- Lock classroom doors unless evacuation orders are issued.
- Account for all students.
- Keep class list with you.
- Refer media to the Executive Director of Communications and Community Relations.
- Keep detailed notes of the event.

SECTION ONE: EMERGENCY CONTACTS

Media / Public Information

All staff must refer all media inquiries to official spokesperson.

- District assumes responsibility for issuing public statements during an emergency.
- Executive Director of Communications and Community Relations serves as official spokesperson unless another individual is designated. In the event that the Executive Director of Communications and Community Relations is out of the office or unavailable, the Public Information Officer will step in.

During an emergency, adhere to the following procedures:

- Principal/designee relays all factual information to the Superintendent or designee on a timely basis.
- Superintendent or designee notifies other schools and may direct the Executive Director of Communications and Community Relations to prepare media release(s) as needed.
- The Executive Director of Communications and Community Relations establishes a media information center away from the school.
- Provide regular updates to media via the Executive Director of Communications and Community Relations.
- Provide only known facts.
- Do not guess, exaggerate, offer personal opinions, or promote rumors or sensationalism.
- Remember it is not necessary to answer all questions from press.
- Maintain a log of all telephone inquiries and conversations. Where possible, use a scripted response to inquiries, e.g., press release.

Executive Director of Communications and Community Relations:

- Emphasize the safety of students and staff.
- Briefly describe school's plan for responding to emergencies.
- Make certain all information released is factual.
- Respect the privacy of affected persons and their families.
- Do not release names or other PII to the media.
- If needed, assist principal in drafting communications to families.
- Determine whether social media use is appropriate. Execute social media plan, if necessary, in conjunction with Public Information Officer (PIO).
- Work with PIO to update District website and social media, if necessary.
- Respond to press as necessary.
- Keep superintendent's office staff in the loop during emergencies.

SECTION TWO: EMERGENCY PROCEDURES

Active shooter

HIDE

- If an evacuation is not possible, find a place to hide out of line of vision.
- Lock and/or blockade the door.
- Silence your cell phone and instruct students to silence their phones too.
- Hide behind large objects and remain very quiet.

RUN

- If there is an escape path, attempt to evacuate.
- Evacuate whether others agree to or not.
- Leave your belongings behind.
- Help others escape if possible. Prevent others from entering the area.
- Call 911 when you are safe.

FIGHT (adult staff only)

- As a last resort, and only if your life is in danger and cannot escape:
- Attempt to incapacitate the shooter. Act with physical aggression.
- Improvise weapons. Commit to your actions.

SECTION TWO: EMERGENCY PROCEDURES

Assault / Fights

- De-escalate and defuse situation, if possible.
- Notify Principal; Principal assembles Crisis Team if needed.
- Ensure the safety of students and staff.
- Call 911 if necessary.
- Notify First Aid/CPR-certified persons in the school building of medical emergencies (See Crisis Team).
- Seal off area where assault took place.
- Principal notifies School Resource Officer/Police if a weapon was used, if the victim has physical injury, or involved sexual contact.
- Principal notifies the parents of students involved in the assault and the Superintendent or designee, as well as their Network Director and ED of Communications and Community Relations if necessary.
- Document all actions. Isolate and ask victim(s) and witness(es) for their account of the incident
- Assess counseling needs of victims and/or witnesses. Implement post-crisis procedures.

SECTION TWO: EMERGENCY PROCEDURES

Bomb Threat

On Receiving a Call That a Bomb is in School or Facility:

If you receive a message, skip to #4.

1. Press record button on phone.
2. Ask where bomb is located, when bomb will go off, what materials are in the bomb, who is calling and why is caller doing this?
3. Notify Principal, School Resource Officer/Police dispatch or 911. After speaking to School Resource Officer, principal needs to decide to evacuate (continue below) or shelter in place (refer to page 26).
4. Principal notifies Superintendent or designee.
5. Principal orders evacuation of all persons inside school building(s) if needed.
6. Faculty should visually inspect classroom for any suspicious item as they are evacuating (DO NOT touch or approach anything suspicious), report anything notable to principal, School Resource Officer / Police.
7. Principal notifies Superintendent or designee.
8. Police will coordinate search of facility.
9. Principal and Superintendent or designee must report incident to Fire Marshal and police.

SECTION TWO: EMERGENCY PROCEDURES

Delayed Start or Early Closure

The start of school may be delayed due to a temporary loss of heating, water or electrical power or severe weather such as a heavy early morning snowstorm that impedes buses and automobiles. School may also be cancelled prior to the scheduled start or closed before the end of the normal day for the same reasons (see **Emergency Release of Students** or **Severe Storm** procedures as appropriate).

- The Superintendent or designee will determine whether the school day will be: 1) cancelled, 2) the start time delayed or 3) early closure initiated based on input from Auxiliary Services, Transportation and Facility Services.
- Principals and Administrators should remind teachers and staff to monitor the district website and social media platforms (Facebook and Twitter) for possible school closure or delayed start announcements whenever inclement weather is expected.

School Cancellation or Delayed Start:

- By 5:30 AM or earlier, the Superintendent will notify the Executive Director of Communications and Community Relations and School Leadership of the intended action.
- The Executive Director of Communications and Community Relations will notify the media if necessary and will work with the Public Information Officer to make sure information is posted the information on social media and the District website.
- By 6:00 AM, School Leadership will notify Principals.
- Principals will notify school staff through the school calling tree.

Early Closure:

- The Superintendent will notify the Executive Director of Communications and Community Relations and School Leadership of the intended action.
- The Executive Director of Communications and Community Relations will notify the media and post the information on the District website.
- Follow Emergency Release of Students procedure.

SECTION TWO: EMERGENCY PROCEDURES

Earthquake

During an Earthquake:

- Use the Drop, Cover, Hold On procedure. If indoors, take cover under a desk, table or bench and hold on (as object you are under is likely to move if you do not hold on), stand in a supported doorway, or along an inside wall or corner.
- Stay calm and stay put. If you are indoors, stay there. If outdoors, stay there.
- Avoid windows, bookcases, hanging fixtures, or outside walls until the shaking stops.
- If no protection is available, drop to the floor and cover your head with your hands.
- Remember that the electricity may go out and/or the fire alarms and sprinklers may activate.

Immediately After an Earthquake:

- Attempt to call 911, if necessary. Call or text School Resource Officer if 911 is unavailable.
- Keep students safe and calm. Carefully evaluate the situation.
- Do not use the light switches, matches, candles, or other open flame.
- Do not attempt to turn off the natural gas service, electrical service or the water main(s). District facilities are fitted with seismic gas valves which automatically turn off the natural gas in the event of an earthquake.
- Do not touch electrical power lines or broken electrical equipment.
- The Custodian will check natural gas, water and electrical lines and report any damage to the appropriate utility and/or Facility Services
- Make sure everyone is all right. Take class list and account for all students.
- Use caution when moving students and staff to safe area(s).
- Administer first aid if necessary. Don't move the seriously injured unless they are still in danger.
- Be prepared for aftershocks.
- If required to evacuate and relocate, please go to the "Evacuation/Relocation Procedures" tab.

SECTION TWO: EMERGENCY PROCEDURES

Fire

- Pull the fire alarm.
- Evacuate students and staff to the Primary Assembly Location. If the Primary Assembly Location is unsafe, evacuate to Secondary Assembly Location
- Follow the normal fire drill routine. If normal route(s) are too dangerous, follow an alternate route. Close classroom doors.
- Teachers should take a class list and account for all students.
- Roll must be taken as soon as possible after an evacuation.
- Principal/Head Custodian must notify SLCSD Fire Marshal and police.
- No one should re-enter the building(s) until declared safe by Fire Department personnel.
- Principal will notify students and staff of termination of emergency and resumption of normal operations.
- Principal/Head Custodian must meet the Fire Department in the front of the school.
- If necessary principal notifies Superintendent or designee.

SECTION TWO: EMERGENCY PROCEDURES

Hazardous Materials / Chemical Spill

Incident in School or Facility:

- Call 911.
- Notify Principal; Principal notifies Superintendent or designee, Network Director, and Executive Director of Communications and Community Relations.
- Seal off area of leak/spill.
- Take charge or evacuate area until Fire Department or Hazmat personnel contain incident.
- Fire Officer in charge will recommend evacuation actions.
- If directed, turn off building ventilation and exhaust systems.
- Follow plans and procedures for sheltering or evacuation.
- Notify parents as soon as possible if students are relocated. This can occur via email, text, robocall, etc. using School Messenger. If communication is not possible due to lack of access, work with the Executive Director of Communications to distribute a message ASAP
- Resume normal operations after consulting with Fire or Hazmat officials.

Incident near School or Facility:

- Monitor KSL television or radio or NOAA radio Emergency Alert System for emergency information.
- Fire, Police or Hazmat personnel will notify Superintendent or designee.
- Superintendent or designee will notify Principal.
- Fire Official in charge of scene will recommend sheltering or taking actions to relocate.
- Follow plans and procedures for sheltering or evacuation.
- Notify parents as soon as possible if students are relocated.
- Resume normal operations after consulting with Fire or Hazmat Officials.

SECTION TWO: EMERGENCY PROCEDURES

Hostage

Hostage Situation:

- Call 911 immediately. Provide details of situation to include detailed description of suspect and if any weapons are involved.
- If hostage taker is unaware of your presence, do not intervene.
- Place school on lockdown or evacuate.
- Seal off area near hostage scene.
- Notify Principal and School Resource Officer; Principal notifies Superintendent or designee.
- Give control of scene to Police and hostage negotiation team.
- Keep detailed notes of events and actions.

If Taken Hostage:

- Follow instructions of hostage taker.
- Ask permission to speak; do not argue or make suggestions.
- Try to keep calm. Calm students if they are present.
- Treat the hostage taker as normally as possible.
- Be respectful to hostage taker.

SECTION TWO: EMERGENCY PROCEDURES

Intruder

Intruder - An unauthorized person who enters school or facility property.

- Politely greet intruder and identify yourself.
- Ask intruder the purpose of his/her visit.
- If purpose is not legitimate, ask intruder to leave.
- Inform intruder that all visitors must register at the main office.
- Notify Principal or designee.
- If feasible, ask another staff member to accompany you before approaching intruder, if feasible.
- Accompany intruder to exit.

If Intruder Refuses To Leave:

- Contact Principal, School Resource Officer/Police dispatch. 911 if necessary.
- Walk away from intruder if he/she indicates potential for violence. Be aware of actions, location, weapons or packages, etc. Monitor location of intruder on school security cameras.
- Principal issues lock-down procedures.
- Principal notifies Superintendent or designee.

SECTION TWO: EMERGENCY PROCEDURES

Radio Communications

Pre-Drill / Pre-Emergency

- Ensure the school has approved UHF radio(s) available.
- Read the radio instructions and know how to operate it.
- Ensure the radio battery is properly charged as all times. Do not leave the radio in the battery charger for extended periods of time.
- Call Technical Services at 801-886-8935 for questions or assistance with radios or battery management.

During a District-wide Radio Drill or District-wide Emergency

- Set your radio to Channel 3 for emergency communications.
- Do not change to another channel, otherwise, you might miss important information.
- **Stand by** for the drill or emergency communications to begin and **LISTEN** for a statement similar to *“Attention please – This is the Radio Network Administrator (RNA) for the Salt Lake City School District Emergency Radio Network. The net is now operational for emergency communications only. Please hold all radio traffic until instructed and continue to monitor this channel.”*
- Do not press the microphone (push-to-talk) button unless you intend to talk.
- When you hear the RNA call for your school or department to check in, respond with your name and the school or department name.
- The RNA will continue this process until all schools and departments have checked in. If a school or department does not respond immediately, the RNA will skip over them and attempt contact again in a few moments. The RNA works from a sequential list and is tracking who has responded. If you do not respond and are skipped over, wait for the RNA to contact you - do not break into the radio traffic.
- If you are certain that the RNA has inadvertently missed your school or department during the check in process, you may interrupt the network by waiting for a pause in the radio traffic and then quickly transmitting “Break”. The RNA will acknowledge the break and then ask for you to transmit your information.

SECTION TWO: EMERGENCY PROCEDURES

Secure Alert and Lockdown

When implementing either a Secure alert or Lockdown, notify Superintendent or designee, Network Director, and Executive Director of Communications and Community Relations. Keep these individuals up to date, as you can, throughout the duration of the incident.

Secure Alert:

A Secure Alert is issued when there is a potential threat to student safety off campus, such as nearby police activity or an emergency situation in the vicinity of the school. During a Secure alert, all exterior doors are locked and monitored. Interior doors are not affected. School carries on as usual.

Secure Alert:

- Principal will issue secure notification by announcing a warning over the PA system.
- Announcement will be a basic alert. Do not use code words.
- Lock all exterior doors and windows. Interior doors are unaffected.
- No one is allowed to enter or exit the building until an all-clear signal is given by the Principal or First Responders (Police / Fire).

LOCKDOWN:

This procedure is used when there is a threat to student safety inside the building. During a lockdown, all exterior and interior doors are locked. No one (including parents) is allowed in or out of the building. A lockdown helps to isolate a threat to one part of the building, removes as many students and staff as possible students from the threat, and allows teachers to more easily gather an accurate count of students in each room.

Lockdown

- Contact 911. Advise School Resource Officer of situation.
- Principal will issue lock-down notification by announcing a warning over the PA system.
- Announcement will be a basic alert. Do not use code words.
- Direct all students, staff and visitors into classrooms.
- Lock all exterior and interior doors and windows (including classroom doors).
- Move all persons away from windows or doors.
- Silence ALL electronic communication devices and maintain silence.
- No one is allowed to enter or exit the building until an all-clear signal is given by the principal or first responders (police/fire).

SECTION TWO: EMERGENCY PROCEDURES

Serious Injury / Death

If incident occurs at school or facility:

- Call 911.
- Notify First Aid/CPR-certified persons in school building(s) of medical emergencies (see Crisis Team).
- Isolate affected student(s) and staff member(s), if possible.
- Secure area as potential crime scene. Do not allow anyone to disturb possible evidence.
- Notify Principal and School Resource Officer;
- Principal notifies Superintendent or designee.
- Activate school Crisis Team. Designate staff person to accompany ill or injured person(s) to the hospital.
- Call Network Director.
- Principal notifies parent(s) or guardian(s) of affected student(s), or emergency contact(s) of affected staff member(s).
- Refer witness(es) to school psychologist/counselor(s). Contact parents of the witnesses.
- Determine the method to notify students, staff members and parents. Student Services, Communications and the Executive Director of Communications, Community Relations and Information Technology can assist with that.
- Refer any media inquiries to the Executive Director of Communications and Community Relations.

If incident occurs outside of school or facility:

- Call Student Services. Student Services can assist with notification templates.
- If possible, notify staff members before normal operating hours.
- Determine the best method of notifying students and parents.
- Announce availability of counseling services for those who need assistance.
- Refer all media inquiries to the Executive Director of Communications and Community Relations.

Post-crisis intervention:

- Meet with counselor(s) and Student Services staff to determine level of intervention needed for students and staff.
- Designate rooms as private counseling areas.
- Escort affected student's siblings, close friends, and other highly stressed individuals to counselors.
- Assess stress level of staff; recommend counseling to those overly stressed.
- Follow up with students and staff receiving counseling.
- Designate staff person(s) to attend funeral(s), if any.
- Allow for changes in normal routines or test schedules to address injury or death.

SECTION TWO: EMERGENCY PROCEDURES

Severe Storm

Severe wind, rain, snow, hail, thunderstorms and flash floods are not uncommon in Utah. Tornadoes, while not common, do occur as well. Procedures for dealing with either of these threats are similar.

- Be alert for weather warnings. Monitor Emergency Alert Stations or NOAA Weather Stations (National Weather Service, Weather Channel, local news media, etc).
- Review “duck and cover” procedures if tornadoes threaten.
- Close windows and blinds; avoid windows and outside walls.
- Take class attendance list; account for all students.
- Be ready to move quickly if flooding threatens.
- Remain in safe areas until warning(s) expire or emergency personnel have issued all-clear advisories.

SECTION TWO: EMERGENCY PROCEDURES

Sheltering-in-place Procedures

Sheltering provides refuge for students, staff, and/or the public within the school building(s) during an emergency. Shelters should be located in areas that maximize the safety of inhabitants. Safe areas may change depending on the type of emergency.

- Identify safe area(s) in each school building. Safe areas may include the auditorium, cafeteria, halls or classrooms. Safe areas will be designated after evaluation.
- Principal warns students and staff to assemble in designated safe area. Bring all persons inside school building(s).
- Principal notifies Superintendent or designee, Network Director, and Executive Director of Communications and Community Relations.
- Teachers take class list. Teachers should account for all students after arriving in a safe area.
- Close all exterior doors and windows in classroom or work area.
- If advised, turn off any exhaust or ventilation system.
- All persons must remain in safe areas until notified by the Principal or emergency responders. See Emergency Directory for the location of emergency supplies.

NOTE: After an Earthquake, shelter-in-place and reunification procedures will be coordinated between school staff and neighborhood residents. The SAFE Neighborhoods program follows checklists in the Just-In-Time Earthquake kit located in the designated location at each school. Students are to remain segregated from unscreened adults during this process.

SECTION TWO: EMERGENCY PROCEDURES

Student Unrest

- Notify Police/School Resource Officer if necessary.
- First ensure the safety of students and staff members.
- Contain area of unrest - seal off as appropriate.
- Move students involved in disturbance to an isolated area.
- Notify Principal; Principal notifies Superintendent or designee.
- Advise staff; Principal may issue lock-down (see **Lock-Down Procedures**).
- Meet with student representatives to address issues, as appropriate.
- Document incidents with a camera, tape recorder or take detailed notes.

Teachers:

- Keep students calm.
- Lock classroom doors.
- Do not allow students outside of classroom until you receive an all clear signal from the Principal.
- Make a list of any students absent from the classroom.
- Document all incidents.

SECTION TWO: EMERGENCY PROCEDURES

Suicide Attempt at School

- Call 911, if necessary.
- Notify Principal, School Resource Officer, school psychologist, counselor, and Student Services.
- Try to calm suicidal person.
- Try to isolate suicidal person from other students and staff.
- Stay with suicidal person until professional help arrives. Do not leave a suicidal person alone.
- Principal notifies Superintendent or designee.
- Principal may schedule meeting with parents and school psychologist /counselor to determine course of action.
- Activate school Crisis Team to implement post-crisis intervention.

SECTION TWO: EMERGENCY PROCEDURES

Utility Break / Disruption

Electricity

- Call 911 only if live electrical line is down.
- Call Executive Director of Auxiliary Services and/or Assistant Director of Facility Services.
- Verify the electrical power is out throughout the entire building and the surrounding neighborhood. Note, emergency lighting will always activate during an outage and should not be confused as a phase loss condition.
- A partial outage, where the lights and equipment are on in some areas of the building may indicate a phase loss. Immediately report this condition to Facility Services.
- Verify the emergency generator is running.
- Wait 15 minutes and then call Rocky Mountain Power at
- (877) 508-5088 to report the outage. Periodically call this same number to check on the status of the outage.
- Principal notifies Superintendent or designee.

Natural Gas

- If natural gas odors are detected, report the condition to the Principal.
- Call Executive Director of Auxiliary Services and/or Assistant Director of Facility Services.
- Evacuate the building immediately.
- Call Dominion Energy at (800) 767-1689.
- Call 911.
- Do not attempt to shut off the gas.
- District facilities are fitted with seismic gas valves which automatically turn off the natural gas in the event of an earthquake.
- Principal notifies Superintendent or designee.

Water

- If the water main break is in the street, call SLC Department of Public Utilities at 801-483-6700.
- Call Executive Director of Auxiliary Services and/or Assistant Director of Facility Services.
- If a water main or line breaks inside the building or on the grounds, turn off the water at the main shut off and try to contain the water or direct it away from or out of the building.
- Principal notifies Superintendent or designee.

SECTION TWO: EMERGENCY PROCEDURES

Weapons

- Immediately notify Principal, School Resource Officer/911.
- Call Lockdown.
- Identify by name the individual suspected of bringing weapon; type of weapon; where the weapon is located; if the suspect has threatened anyone; and any other details that may prevent the suspect from hurting someone or themselves.
- If Teacher suspects that the weapon is in the classroom, a neighboring Teacher should be confidentially notified.

Principal:

- Call Police if a weapon is suspected to be in school.
- Principal notifies Superintendent or designee.
- Accompany the suspect to a private office to wait for the Police.
- Conduct search with Police or School Resource Officer.
- Inform suspect why you are conducting the search.
- Keep detailed notes of all events and why the search was conducted.
- If the suspect is a student, notify the student's parent(s) or guardian(s). Explain why the search was conducted and the results of the search.
- If the suspect threatens you with a weapon, do not attempt to disarm him/her. Back away with your arms up. Try to remain calm.

SECTION THREE: RELOCATION AND REUNIFICATION

Emergency Release of Students

Release of students in grades K-8, other than the regularly scheduled hours, is prohibited unless a parent or another authorized responsible person has been notified and has assumed responsibility for the child. Students in grades 9-12 may be released without such notification if the Principal or designee determines that the child is reasonably responsible and notification is not practical.

- Principal will contact the Superintendent or designee for authorization to cancel school or close school early.
- When a decision is made, Principal will notify Network Director and the District Executive Director of Communications and Community Relations.
- Principal will determine and communicate the pick-up point or alternate pick up point for bus drivers and parents. Principal will relay this information as soon as possible to the Transportation Manager.
- Principal will notify Network Directors Services to arrange for bus transportation and Food Service support as needed.
- If cancellation or closure is approved, principal will initiate School Messenger plan to contact as many parents and authorized guardians as possible using email, robocall, text alert, etc., and the school calling tree. Principal will work with Executive Director of Communications to determine whether social media and/or the school or district website should also be used to communicate

On/Near-Site Evacuation Assembly Points

Primary location South Field
Secondary location..... West Field

Off-Site Emergency Relocation Center

NameLDS Church Parking Lot
Address 2350 S 2100 E, SLC, UT 84109
Contact Person Lucas Charon
Contact Phone Number 801 867-8573

Location of Emergency Supplies

First Aid..... Main Office
Just-In-Time Kit Main Office
CERT supplies Main Office

SECTION THREE: RELOCATION AND REUNIFICATION

Evacuation To On-Site or Near-site Locations:

- Call 911 if necessary.
- Principal orders evacuation if students and staff should be moved outside of school building(s) to Primary or Secondary Evacuation Assembly Points.
- Principal will direct students and staff to follow fire drill procedures and route. If normal route is too dangerous, follow an alternate route.
- Principal and Head Custodian to shut off all electrical equipment, gas, water faucets, air conditioning, heating and ventilation, if possible.

Teachers:

- Direct students to follow normal fire drill procedures unless Principal alters route or normal route is too dangerous.
- Take class list when evacuating. Take roll as soon as possible after arriving at the evacuation site.
- Close classroom doors and turn out lights.
- After successfully evacuating, teachers will account for all students using class list. Inform Principal ASAP if any students are missing.

Relocation To An Off-site Location:

- Principal determines relocation procedures after consulting with Superintendent or designee.
- Principal notifies Network Director and Executive Director of Communications and Community Relations.
- Principal orders evacuation if students and staff are to be moved to Emergency Relocation Center.
- Principal notifies Emergency Relocation Center.
- Designated Crisis Team member coordinates transportation if students are evacuated to Emergency Relocation Center. District Transportation Supervisor is contacted by the Crisis Team member and informed that relocation is taking place.
- If students are moved to the Emergency Relocation Center, stay with your class. Take roll again when you arrive at the Emergency Relocation Center.

SECTION THREE: RELOCATION AND REUNIFICATION

Reunification:

- **All Levels:** Students will be released to their parents or designee, as prearranged on Emergency Contact Card, with government issued photo identification. ID must be presented at a Reunification Station outside the building, facilitated by the Family Reunification team.
- **Intermediate & High School Levels:** Same as above except for those students whose parents have signed an Emergency Release Permission Form giving permission for the student to be released, after being excused, following an emergency.

SECTION FOUR: FORMS AND REPORTS

AFTER ACTION REPORT

Please fill out after each event/incident and send to Facility Services

School: _____
Person Completing
Report: _____
Event / Incident _____ Event / Incident
Date: _____ Time: _____
Time at which accountability for students, staff, and visitors was
completed: _____

Mark One

Incident Drill

Incident Type

Active Shooter Severe Weather & Natural
Disasters
 Aircraft Emergency School Disturbances
 Bomb Threat Terrorism
 Child Missing / Kidnapped / Left at Threat Management Process
School
 Fire Emergency Utility Failures
 Hazardous Material Spills or Release Weapons
 Hostage situation Secure alert/Lockdown
 Medical Emergencies Other _____

Response Information

Lockdown Shelter In
Place Other _____
 Secure Alert Evacuation

Resources Utilized

Fire DOH (Department of Health)
 EMS (Emergency Medical Services) HSEMA (Homeland Security and Emergency Management
Agency)
 PD (Police Department) Other _____

Narrative:

Things that went well:

Things that need improvement:

Action taken to improve:

Signature: _____ Date: _____

SECTION FOUR: FORMS AND REPORTS

Date:

EMERGENCY COMPLIANCE AND ASSURANCE FORM

By July 1 of each year, each LEA shall certify to the Board that the LEA Emergency Preparedness and Emergency Response Plan has been practiced at the school level, presented to and reviewed by its teachers, administrators, students and their parents, local law enforcement, and public safety representatives consistent with Section 53A-3-402(18) and R277-400. In an effort to ensure compliance, an individual report shall be completed for each school in each school district and every charter school.

School Name: Grades Housed: School District:

School Address: or Check Box if Charter School

- Emergency Preparedness and Emergency Response Plan has been practiced at the school level, presented to and reviewed by its teachers, administrators, students and their parents, local law enforcement, and public safety representatives? Yes Date No
- School has appointed a committee to prepare, modify or adjust existing plan to meet individual school needs and features, to satisfy this rule, to include Governmental agencies and bodies vested with responsibility for directing and coordinating emergency services on local and state levels? Yes No
- A copy of the plan has been sent to be filed in the LEA superintendent's or charter school director's office? Yes No
- Parents and staff have received written notice of relevant sections of the plan, applicable to the school? Yes Date No
- School Emergency Preparedness/Emergency Response week is designated prior to April 30th each school year? Yes Date No
- The plan contains measures that assure students receive adequate educational services and supervision during school hours? Yes No
- All school staff have been instructed that they are responsible to assure reasonable care and supervision of children until responsibility has been affirmatively assumed by another responsible party in evacuation procedures? Yes No
- School staff are instructed that the release of a child below ninth grade at other than regularly scheduled hours is prohibited, unless the parent or another responsible person has been notified and has assumed responsibility for the child? Yes No
- The plan contains measures to assure emergency preparedness training for students is age appropriate? Yes Training Date No
- Fire Drills and Other Emergency Drills:

Elementary schools shall conduct emergency evacuation drills **at least once each month** during school sessions.

Secondary schools shall conduct emergency evacuation drills for fire **at least every other month** during school sessions.

All schools: the first fire drill shall be **conducted within the first 10 days of school**. Required emergency drills may be substituted every other time by a security or safety drill, to include: shelter in place; earthquake drills; or lock down for violence.

Note: Schools that include both elementary and secondary grades in the school shall comply, at a minimum, with the elementary emergency drill requirements.

Select school type reporting for:

- Secondary School
 Elementary School

First Drill: Second Drill: Third Drill: Fourth Drill: Fifth Drill:
Type of Drill: Type of Drill: Type of Drill: Type of Drill: Type of Drill:
Sixth Drill: Seventh Drill: Eighth Drill: Ninth Drill: Tenth Drill:
Type of Drill: Type of Drill: Type of Drill: Type of Drill: Type of Drill:

- At least one drill for school violence emergencies is conducted annually? Yes Date No
- Student assistance programs such as care teams, school intervention programs, and interagency case management teams have been developed for the school? Yes No
- There is coordination between school and local law enforcement, and other public safety representatives for school safety emergencies, including cooperative agreements with other governmental entities, as reasonably feasible and appropriate? Yes No
- The plan delineates communication on channels and lines of authority with the LEA, city, county, and state, including instruction to school staff that, in the event of an emergency involving more than one LEA, or when state or federal assistance is involved, the superintendent for school districts and the local charter school board through its director are the respective chief officers? Yes No
- School staff have been instructed that school personnel shall maintain control of public school students and facilities during the regular school day or until students are released to a parent or legal guardian, in the event of an emergency? Yes No

Name of Individual Preparing Report: Title of Preparer:

Preparer's E-Mail: